



Landseer Road
Sutton, SM1 2DE
Offers over £250,000



Landseer Road, Sutton, SM1 2DE

Few apartments come to market that offer as much as Highgrove Court. Being such a great layout and size, it really is a fantastic opportunity for you to move into what may be your first home, downsize to or even rent out if you are looking for that rock-solid investment, as this is a well regarded development is incredibly well looked after, with communal grounds which everyone will appreciate. You'll be amazed sitting in your spacious living room that doesn't just have ample room for you to sit back and relax in, but also has space for you to dine, whether it be with family or friends, grabbing breakfast before work or even when you throw one of your dinner parties. So, what about the rest of the property? Well you'll certainly not be disappointed with the lovely kitchen that has more than enough space to cook up a storm in. When it's time to catch up on some sleep, we'll bet that you'll have an amazing nights rest in your large master bedroom that is a sanctuary of style and peace - with you also having lots of space for wardrobes. On the outside, as we mentioned, the location is brilliant. A short walk to fantastic local amenities in Sutton with a fantastic selection of shops, restaurants and bars, with Sutton mainline station whizzing you up to London in under an hour door to door! The final piece of the jigsaw comes by the way of your own allocated parking space.



GROUND FLOOR

Hallway

Living/Dining Room
16'5 x 12'10 (5.00m x 3.91m)

Kitchen
10'3 x 8'4 (3.12m x 2.54m)

Bedroom
12'6 x 9'11 (3.81m x 3.02m)

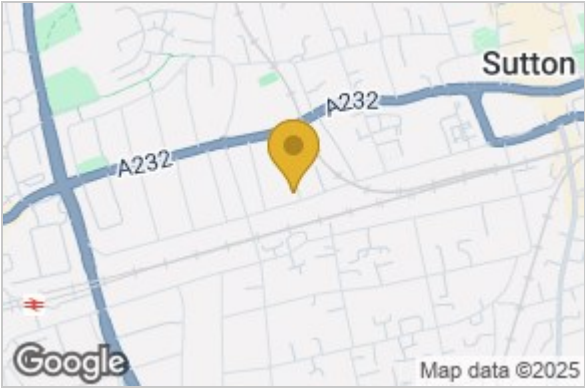
Bathroom
5'10 x 5'7 (1.78m x 1.70m)

OUTSIDE

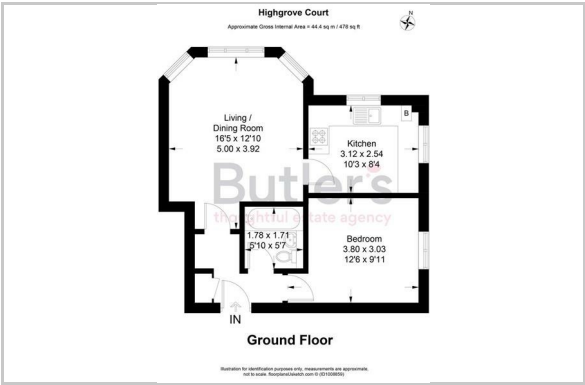
Allocated Parking

Communal Gardens

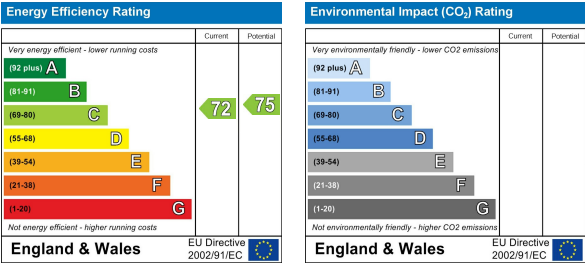
Area Map



Floor Plan



Energy Efficiency Graph



These particulars, whilst believed to be accurate are set out as a general outline only for guidance and do not constitute any part of an offer or contract. Intending purchasers should not rely on them as statements of representation of fact, but must satisfy themselves by inspection or otherwise as to their accuracy. No person in this firms employment has the authority to make or give any representation or warranty in respect of the property.